

ALL PARKING AREA
TO BE ASPHALT
BLACK TOP
2" O.C.T

CURB ON 10TH & KRAUSE ST.
SIDEWALK + ST. PAVING
BUNKER STOPS ON NORTH
EAST, & SOUTH SIDES
OF PARKING AREA

ADJACENT
PARKING
AREA

PLOT PLAN
FOR KINGDOM
HALL

NEW DEDICATED PROP. LINE

NEW CURB

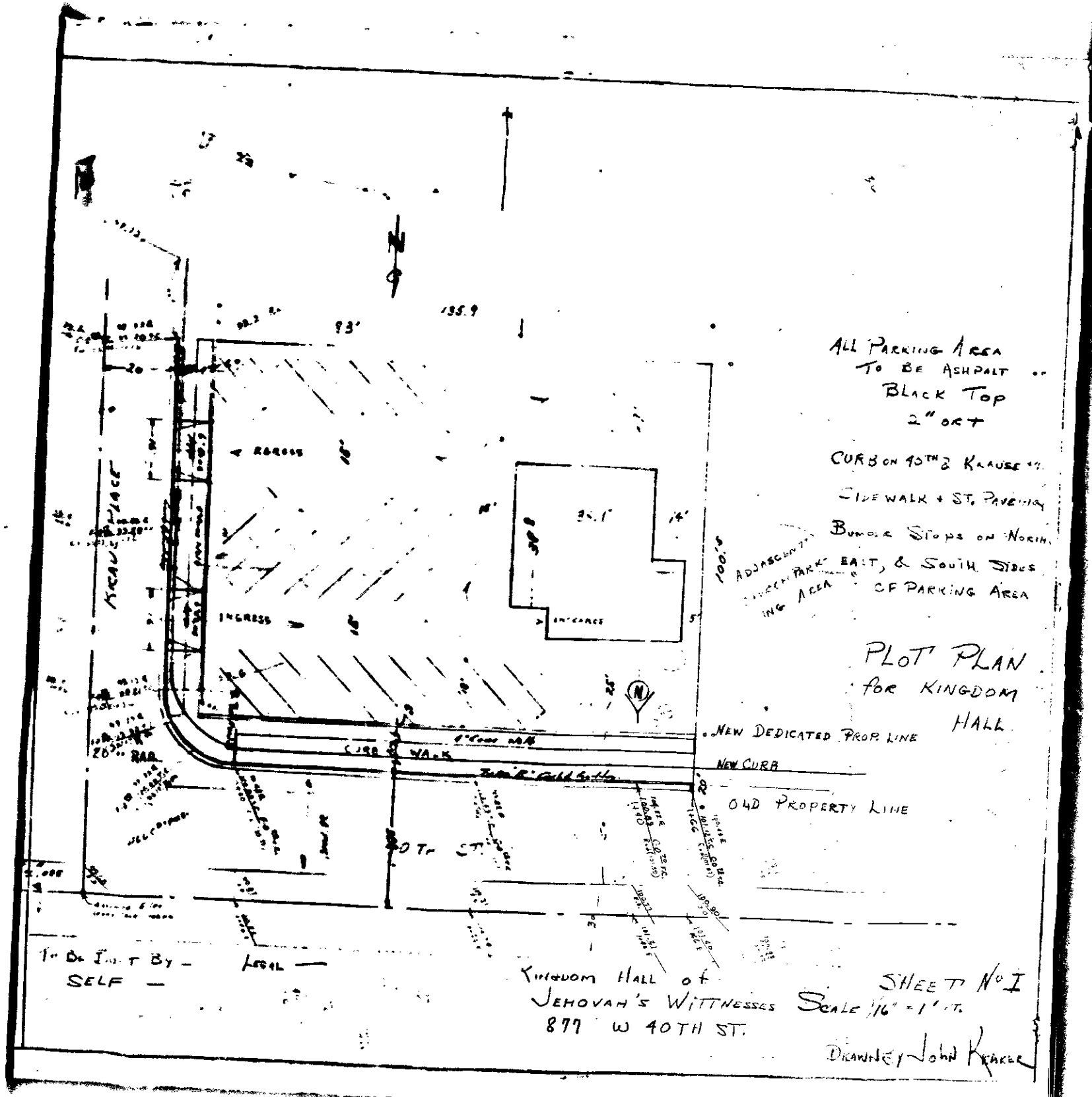
OLD PROPERTY LINE

1" OR 1/2" BY - LEVEL -
SELF -

KINGDOM HALL OF
JEHOVAH'S WITNESSES
877 W 40TH ST.

SHEET No. I
SCALE 1/16" = 1' FT.

DRAWN BY JOHN KRAUSE



ALL PARKING AREA
TO BE ASPHALT
BLACK TOP
2" O.C.T

CURB ON 10TH & KRAUSE ST.
SIDEWALK + ST. PAVING
BUNKER STOPS ON NORTH
EAST, & SOUTH SIDES
OF PARKING AREA

ADJACENT
PARKING
AREA

PLOT PLAN
FOR KINGDOM
HALL

NEW DEDICATED PROP. LINE
NEW CURB
OLD PROPERTY LINE

1" OR 1/2" BY - LEVEL -
SELF -

KINGDOM HALL OF
JEHOVAH'S WITNESSES
877 W 40TH ST.

SHEET No. I
SCALE 1/16" = 1' FT.
DRAWN BY JOHN KRAUSE